

**SPACE CURRENTLY AVAILABLE
AT THE AIRPORT OF
FIUMICINO**



SPACE IN CARGO CITY FOR USE TO BE DEFINED

Published on May 24th, 2021

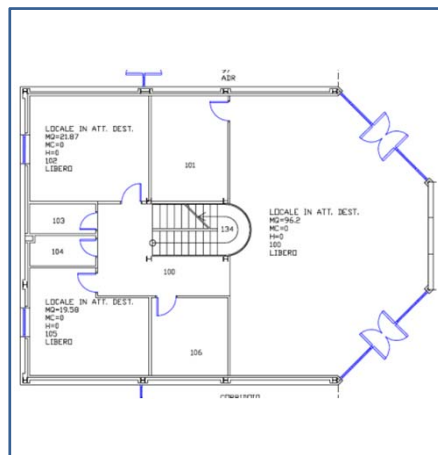
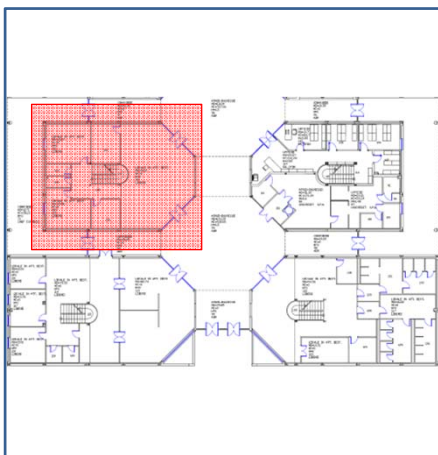
Disclaimer: the data and information shown are purely indicative and are also subject to modifications and variations. Aeroporti di Roma does not guarantee the accuracy of such data / information nor does it ensure that they are current at the time of presentation / receipt of any expressions of interest; Aeroporti di Roma therefore does not assume any responsibility for any inaccuracies reported in this document.

SPACE IN CARGO CITY FOR USE TO BE DEFINED

The building called "Servizi Comuni" is located in the Cargo City area at the Fiumicino airport. The property, built in 2004, has a total area of about 12,000 sqm with a ground floor with restaurant and bank service, while the other two floors are entirely intended for office use. In the vicinity there are dedicated parking lots and a passage for access to the airside area.



Airport	n. PG	Building	Inteded use	Floor	Room	Total gross area(smq)	Property conditions
FCO	333C	Cargo City «Servizi Comuni»	Various - to be defined in the operator's proposal	GFL 1st FL	100 and annexes	GFL = 180 1st FL= 100	To refurbished



ACCESSIBILITY

Easily accessible by road, rail, plane and from the center of Rome with direct connections every 30 'minutes. Furthermore, parking is guaranteed for both employees and visitors.

FACILITIES AROUND THE BUILDING

Highway A91 Rome-FCO, Railway Station FS, Parking lots, Departures / Arrivals Terminal, Food & Beverage, Retail, Bus Station, Taxi, CC Rental, Rent a Car, Arrival Lounge, Hotel.